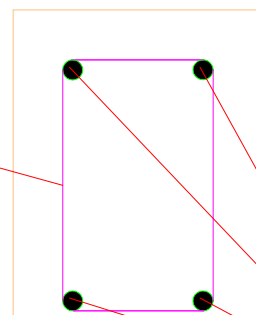
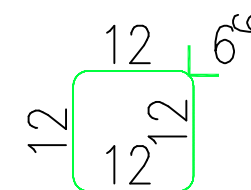


NR7 $\phi 6$ A-0 L=94cm
CO 15 CM

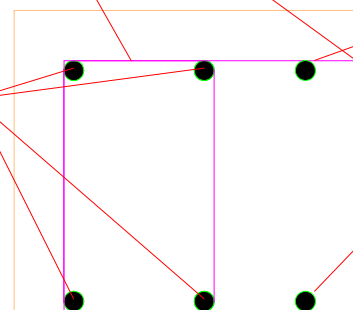


NR-1 $\phi 12$
L=10,00mb+3,00mb



NR8 $\phi 6$ A-0 L=60cm
10 SZT. CO 15CM

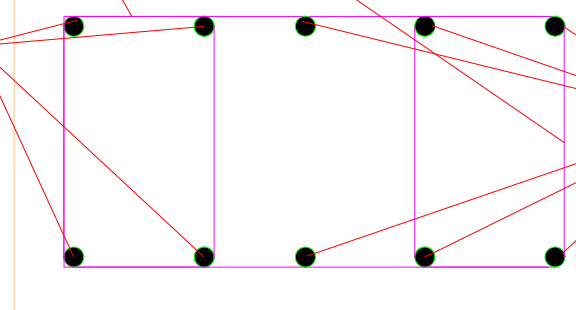
NR5 $\phi 6$ A-0 L=138
CO 13/20/25 CM



NR-1 $\phi 12$
L=10,00mb+3,00mb

NR-1 $\phi 12$
L=10,00mb+3,00mb

NR5 $\phi 6$ A-0 L=138
CO 13/20/25 CM



NR-1 $\phi 12$
L=10,00mb+3,00mb

NR-1 $\phi 12$
L=10,00mb+3,00mb

BETON C20/25 (B25) W-4

rys. nr 9 PRZEKRÓJ C-C

BRAMA B-2
Opracował:

.....
tech.bud. Marek Smorowiński
upr. bud. 205/87/Pw